

DRAWING INDEX	
1	COVER SHEET
2	SITE CONTEXT
3	BUILDING I PHOTOS
4	BUILDING II PHOTOS
5	BUILDING I BASEMENT PLAN
6	BUILDING I FIRST FLOOR PLAN
7	BUILDING I SECOND FLOOR PLAN
8	BUILDING I THIRD FLOOR
9	BUILDING I FOURTH FLOOR
10	BUILDING I FIFTH FLOOR
11	BUILDING I ROOF PLAN
12	BUILDING II BASEMENT PLAN
13	BUILDING II FIRST FLOOR PLAN
14	BUILDING II SECOND FLOOR PLAN
15	BUILDING II THIRD FLOOR
16	BUILDING II FOURTH FLOOR
17	BUILDING II FIFTH FLOOR
18	BUILDING II ROOF PLAN
19	LANDSCAPE PLAN
20	GRADING PLAN

OWNER:
 5533-518 9th Street NE, Washington, LLC
 Akelius U.S. LLC
 1620 Eye St., NW
 Ste 703
 Washington, D.C. 20036
 ph: (202) 844-9600

STRUCTURAL CONSULTANT:
 Ehlert-Bryan DC
 1420 K St, NW
 Suite 110
 Washington, DC 20005
 ph: (202) 842-3232

ARCHITECT:
 GTM Architects, Inc.
 7735 Old Georgetown Road
 Suite 700
 Bethesda, MD 20814
 ph: (240) 333-2000



LAND USE COUNSEL:
 Holland & Knight, LLP
 800 17th Street, NW Suite 1100
 Washington, D.C. 20006
 ph: (202) 419-2460

MEP CONSULTANT:
 Built Environment Engineers
 4620 Lee Highway
 Suite 202
 Arlington, VA 22207
 ph: (703) 888-0649

CIVIL/LANDSCAPE CONSULTANT:
 Bohler Engineering
 131 Pennsylvania Ave NW
 #1250
 Washington, DC 20004
 ph: (202) 524-5700

CAPITOL EAST APARTMENTS

BZA APPLICATION





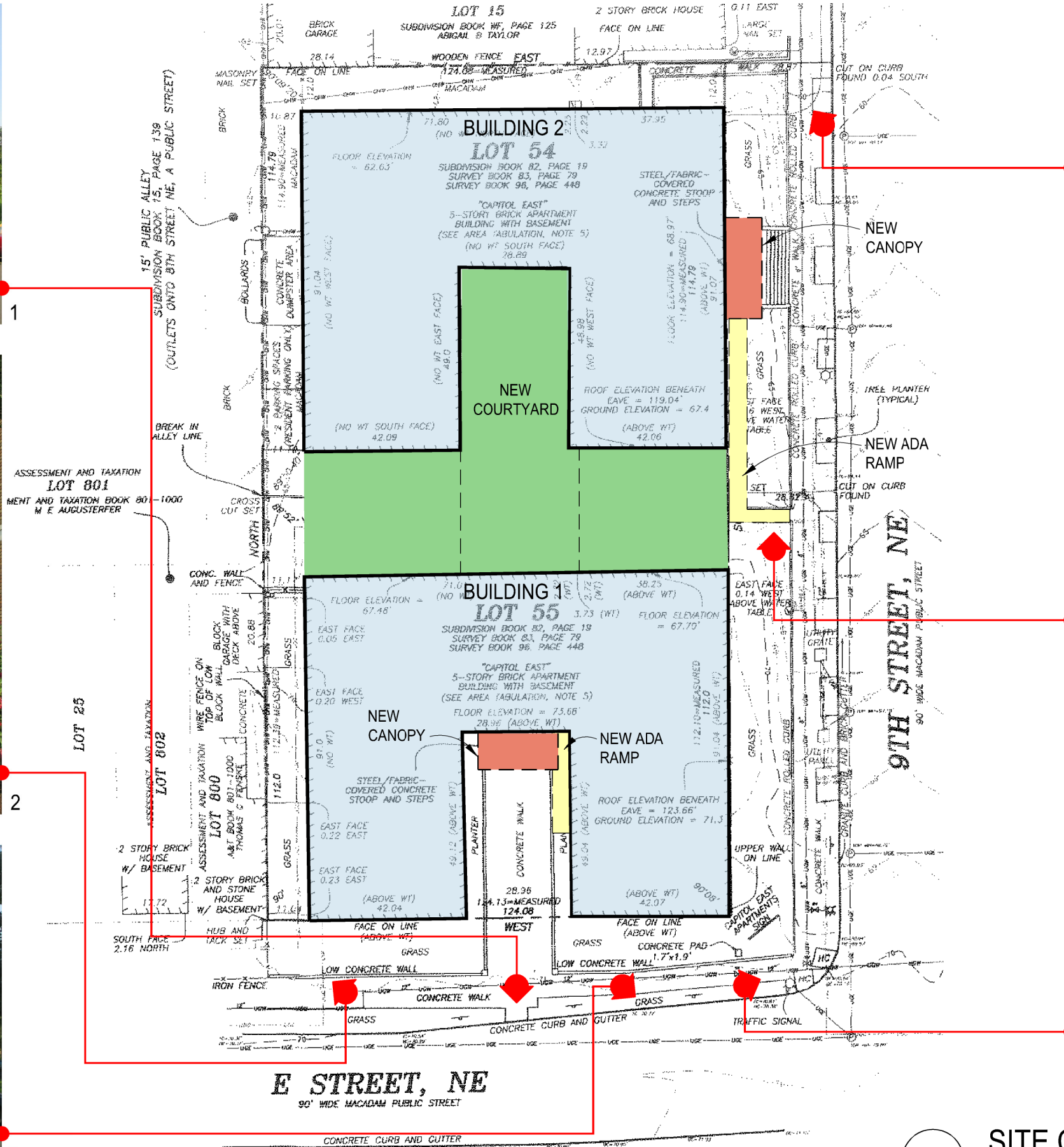
1



2



3



4



5



6

1 SITE CONTEXT
Scale: N.T.S.



CAPITOL EAST APARTMENTS

GTM ARCHITECTS



1



2



3



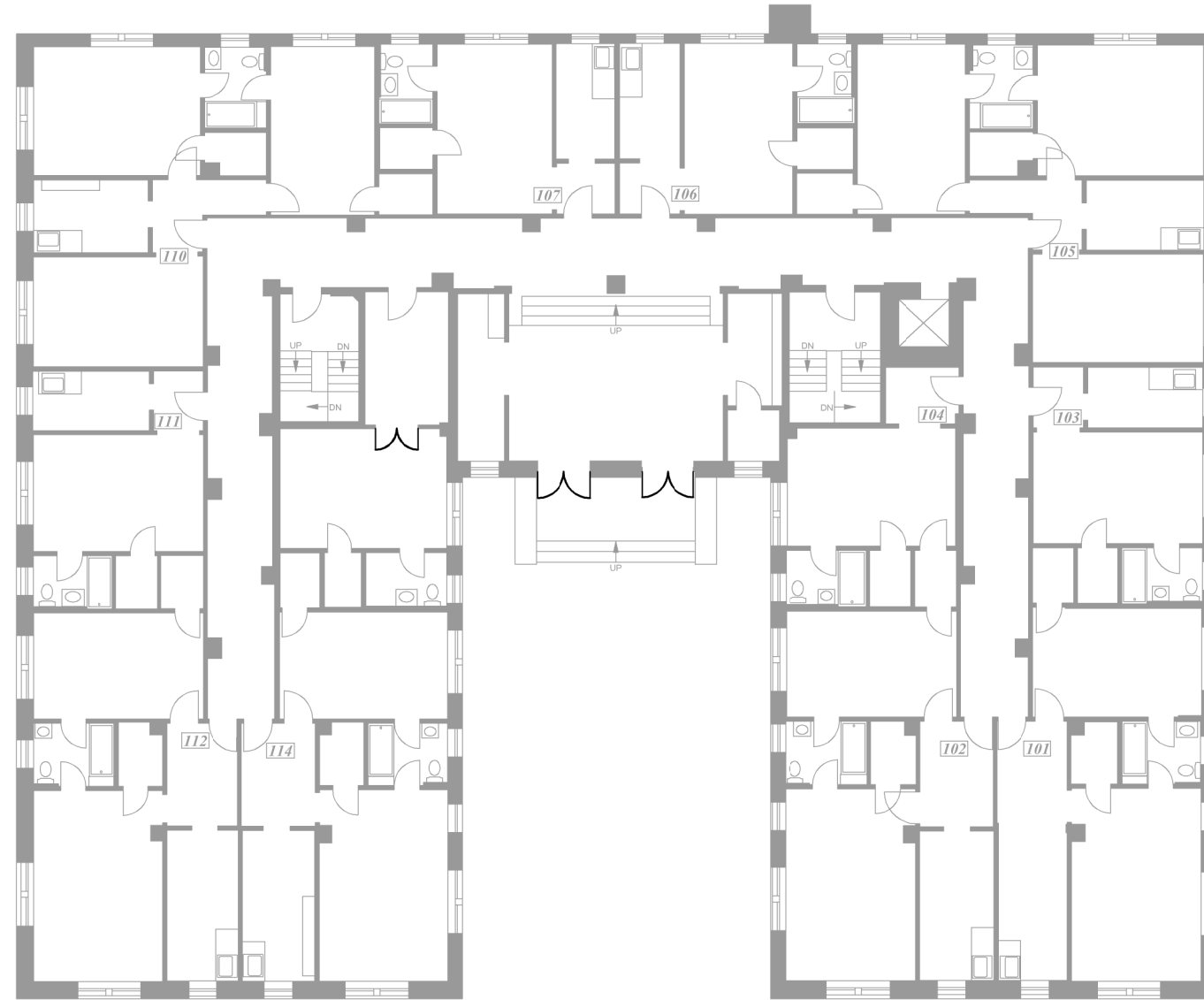
4



5



6



1 BUILDING PHOTOS
Scale: 1/16"=1'-0"

CAPITOL EAST APARTMENTS

BUILDING I



GTM ARCHITECTS